

NORTHERN KAROLINE



- Geophysical seabed mapping
- ROV Operations
- Geotechnical sampling
- Environmental assignments

NORTHERN KAROLINE



TYPE OF VESSEL

DP Survey & ROV Vessel

SPECIFICATIONS

Flag:	Danish
Class:	DNV 1A1 ICE-C EO
Call sign:	OZIP2
Home port:	Aarhus

BUILDER & DIMENSIONS

Built:	A. & J. Inglis Ltd. Scotland UK
Year built/rebuilt:	1950, rebuilt 1984, 2020
Gross tonnage:	588 tons
Net tonnage:	176 tons
LOA:	51.15 m
Breadth:	9.00 m
Draft:	4.90 m with Azimuth thruster 5.25
Speed:	Max 15.5 knots. Bollard pull: 20 t
Tank capacity:	Fuel Oil: 87.6 m ³ , Fresh water: 40.3 m ³

PROPULSION:

Main Engines:	Deutz S / BV6M628 1600 BHP & Caterpillar 3412 650 BHP Forward Azimuth thruster type Brunvoll AR55 Retractable 650 BHP. The thruster is also approved as propulsion machinery
----------------------	---------------------------------------------------------------------------------------------------------------------------------------------------------------------------------------------

POWER SUPPLY:

Diesel generators:	2 x Caterpillar 3306 w/ Stamford MSC- 434 each 180 KWA, 3 x 230 V 50 Hz 1 x John Deere 6068TF258 120 KW with 112 KW/135 KWA, 3 x 230 V 50 Hz
---------------------------	----------------------------------------------------------------------------------------------------------------------------------------------------------

DECK EQUIPMENT

Deck Cranes:	AMCO VEBA 946FM-4S SWL 9,180 kg 4.55 m- 3,220 kg 12 m, Rotzler winch ti- tan TC5, first layer 5.7 tons- top layer 4.3 tons Heila Marine Crane SWL 3.6 tons, 2.75 meters, 0.8 tons, 10.4 meters A-Frame aft 3.8 m width, 4 m height, SWL 2 tons
---------------------	----------------------------------------------------------------------------------------------------------------------------------------------------------------------------------------------------------------------------------------------------------------------------

NAVIGATION/COMMUNICATION EQUIPMENT

NAVIGATION EQUIPMENT

1 x 3 cm JRC JMA-5310 ARPA radar
1 x 3 cm Furuno FR 2110 ARPA radar 2 x DGPS Furuno GP-36/GPS, GP-30
2 x Transas NaviSailor 4000 dual ECDIS
1 x satellite Gyro Compass SC-50 1 x Simrad GC 80
1 x autopilot type Simrad AP 70
1 x echo sounder type Furuno FRV-1150
1 x Speed log simrad SAL

COMMUNICATION EQUIPMENT

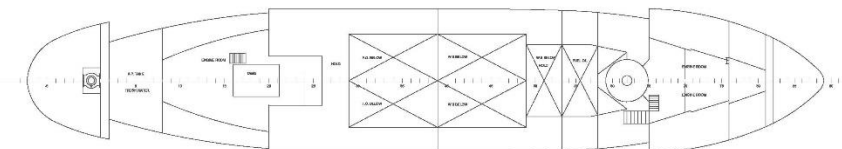
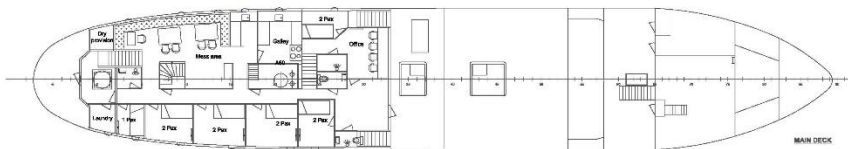
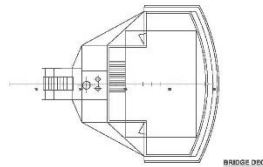
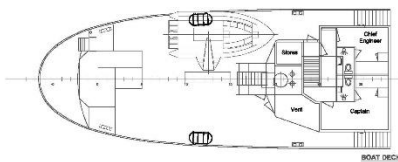
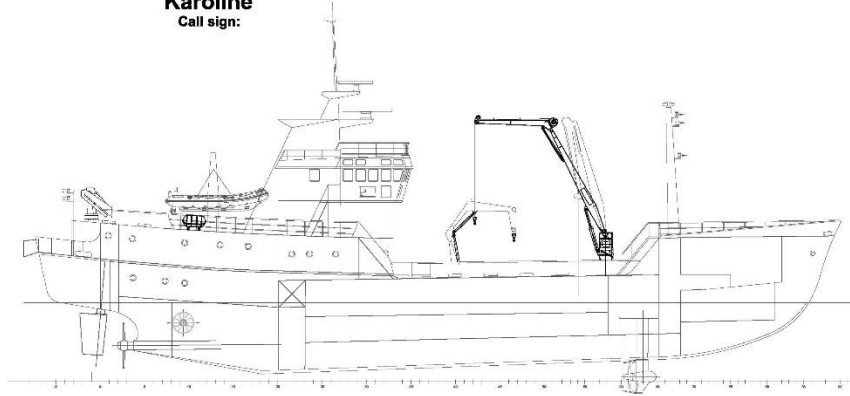
1 x Sailor RT-4822 VHF DSC Class A
1 x Sailor 6310 MF/HF SSB Radio Telephone, DSC CH1
1 x Sailor SE-406-II EPIRB Manuel
1 x Sailor SE-406-II EPIRB Auto (Float free)
1 x Sailor AIS-SART 5051
2 x Sailor SP 3520 Portable VHF Radio 1-Radio 2
1 x Sirius SIR-3 Navtex
1 x Furuno GP-37 GPS
1 x JOTRON TR-8000 AIS Class A
1 x Sailor 6210/3027SS LRIT and SSAS
1 x Sailor RT 2018 VHF
1 x Sailor RT 2027 VHF
4 x Sailor SP 3510 VHF work/ISPS

ACCOMMODATION:

Surveyors' office
Capacity for up to 12 surveyors
6 x two-man cabins for surveyors

Rev. Date Correction int.

General Arrangement Karoline Call sign:



Main Particulars:
 Length overall 51,55 m
 Length between Perps 43,02 m
 Depth moulded 5,00 m
 Depth to Main Deck 3,55 m
 Flag Denmark
 Class Notation DW



Northern Survey
 Strandvej 13
 8350 Hadsten
 Denmark

Draw No.	Drawn	Checked	Scale	Date	Sheet No.
20020-03					
20020-03					
20020-03					
20020-03					

Northern Survey
 This drawing is the property of Northern Survey and shall not be used
 without the written permission of Northern Survey.