



- Geophysical seabed mapping
- ROV Operations
- Geotechnical sampling
- Environmental assignments
- PLGR

OSV Cecilia



TYPE OF VESSEL

DP1 Survey & ROV Vessel

SPECIFICATIONS

Flag:	Faroe Island
Class:	DNV + 1A1-Supply vessel
Call sign:	OZ2157
Home port:	Tórshavn

BUILDER & DIMENSIONS

Built:	Holland in 1974
Converted:	1985 (Multifunctional) 1994 (FiFi) /1995 (Oilrec) 2015 Navis DP2, classed as DP1
Gross tonnage:	1310 tons
Net tonnage:	393 tons
Dead weight:	1050 tons
LOA:	61.50 m
Breadth:	12.00 m
Draft:	4.50 m
Service Speed:	8 knots
Max speed:	10 knots

PROPULSION:

Main Engines:	2 x 1000 BHP Industrie 6D7 HDN at 410 rpm
Propulsion:	2 x 1000 BHP Aquamaster US 801/ 4750 Azimuths
Bow thruster:	1 x 350 BHP Caterpillar
FWD Azimuth:	1 x 1600 BHD Deutz 6M688/ Aquamaster US 80/4750

POWER SUPPLY:

Diesel generators:	1x375 kVA Volvo Penta D13 1 x 220 kVA Caterpillar 3406 440 V 60 Hz 3 phase 240 V 60 Hz, UPS available
---------------------------	--

DECK EQUIPMENT

A-Frame:	SWL 25 T. H: 11,5m wide 5m 25 T. Ace winch on first layer
Deck crane aft STB:	Petrel KC120, 9.5 ton at 13.2 m
Deck crane midship:	1 x Hydralift MCV 603, 1.5 ton at 9m
Winches:	1 x Tugger winch- 5 tons
Capstans:	2 x Capstans -5 tons
Free Deck Space:	200 sqm with protected rescue zones
Over-the-side poles:	2 poles for various over the side mounted equipment

NAVIGATION EQUIPMENT

Radar #1:	Furuno FAR-2117-BB X-Band with ARPA
Radar #2:	JRC JMA-5332-12 S-Band with ARPA
Chart System:	Transas NaviSailor 4000 dual
ECDIS GPS #1:	Furuno GP-150
GPS #2:	Furuno GP-80
Autopilot:	Navis AP4000
Gyro #1:	Alphatron Alphaminicourse
Gyro #2:	Alphatron Alphaminicourse
Satellite Compass:	Furuno SC-50 (also Gyro 3 for DP System)
Log:	Speed log Simrad SAL
Echo Sounder:	Skipper GDS-101 Navigation Sounder

COMMUNICAITON EQUIPMENT

VHF DSC Class A:	Furuno FM-8800
VHF DSC CLASS A:	Sailor RT-4822
MF/HF SSB Radio Telephone:	Furuno FS1570-15, 150W
MF/HF DSC Receiver/Modem:	Furuno DSC-6A
EPIRB Manual:	McMurdo SMARTFIND E8
EPIRB Auto (float fee):	Sailor SE406-II Hammer H-20
Radar SART #1:	Sailor AIS-SART 5051
Radar SART #2:	Sailor AIS-SART 5051
Navtex:	Furuno NX-700
AIX Class A:	Furuno FA-100
SSAS/LRIT:	Furuno Felcom16
VHF:	Sailor RT-146
Portable VHF Radio 1, 2, 3:	Sailor SP3520
DGPS:	Furuno GP-90

DP CONTROL SYSTEM:

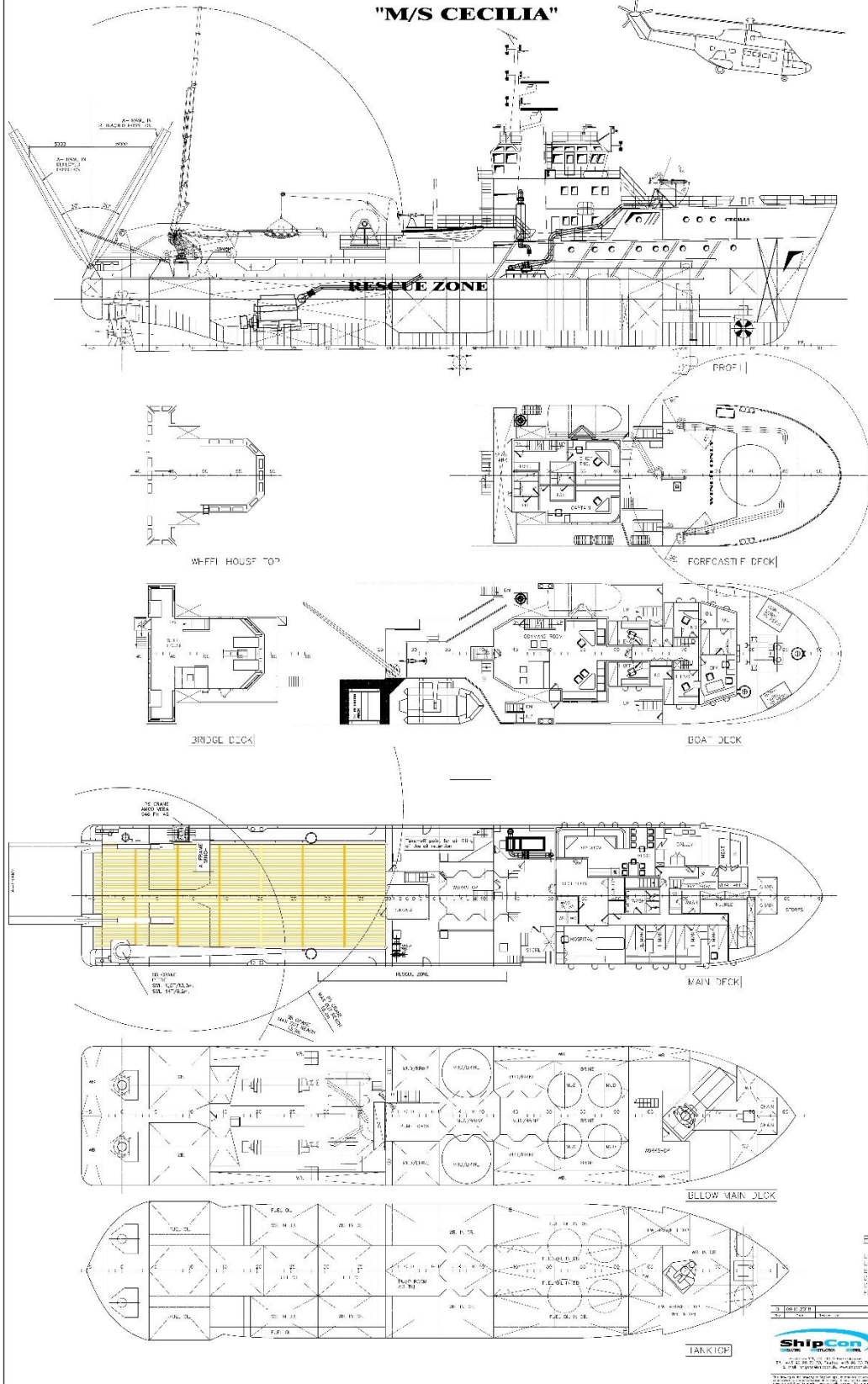
DP/IJ System:	Navis NavDP 4022/4002, DNV Class DPS1
GNSS #1:	Fugro SeaStar 9205 GPS/GLONASS, L-Band DGNSS Receiver
GNSS #2:	Fugro SeaStar 9205 GPS/GLONASS, L-Band DGNSS Receiver
Wind Sensor #1:	Vaisala WMT702 Ultrasonic
Wind Sensor #2:	Vaisala WMT702 Ultrasonic

ACOMMODATION:

Cabins:	16 cabins single/ double 1 treatment
Manning:	25 incl. crew

GENERAL ARRANGEMENT

"M/S CECILIA"



PRINCIPAL DIMENSIONS:

LENGTH O.A.	57.50M
LENGTH P.P.	50.30M
BREADTH B.L.	17.20M
DEPTH TO MAIN DECK	5.20M
DRAUGHT	5.20M
DISPLACEMENT	2000T

NO.	2310-CC-001	REV.	001
DATE	23/0	ISSUED BY	CC-001
		GENERAL ARRANGEMENT Cecilia NORTHERN SURVEY	