

# NORTHERN VICTORIA



## IMT 975 Offshore Supply / Survey / ROV Support Vessel (DP2)

Build Yard > Balenciaga, Spain



Northern Survey ApS  
Brundtvej 13 · DK-8370 Hadsten  
[contact@northern-survey.com](mailto:contact@northern-survey.com)

## DIMENSIONS

LOA	75.00 metres
LBP	64.8 metres
Breadth Moulded	16.00 metres
Draft Loaded / Depth	5.75 metres

## TONNAGE

GRT	2786 Tonnes
NRT	836 Tonnes
DWT	2250 Tonnes

## CAPACITIES AND CRANES

Fuel Oil (MGO) /	566.64 m <sup>3</sup>
Conection Fresh Water /	917.34 m <sup>3</sup>
Connection Ballast Water	1480.91 m <sup>3</sup>
Deck Area	Approx 640 m <sup>2</sup> (Incl. Mezz Deck 5t/m <sup>2</sup> )
Deck Loading	5 t/m <sup>2</sup> (midship) & 7 t/m <sup>2</sup> (aft)
Deck Crane # 1	Hydralift 1.5t @ 11 metres
Deck Crane # 2	TTS Norlift 20t @ 20 metres / 2000 metres wire
Deck Tuggers	2 x 5 Tonnes

## ENGINES / THRUSTERS / AUX

Main Engine(s)	4 x MAK 6M25 @ 2322 BHP per unit
Proppeller(s)	2 x Contra Rotating Azimuths
Azimuth Thruster(s)	1 x RRM Azimuth @ 1200 BHP
Bow Thruster(s)	2 x RRM Tunnel @ 1042 BHP
Emergency Generators	1 x Cat Emer Genset

## CONTROL SYSTEMS AND DYNAMIC POSITIONNING

Control Positions	Forward & Aft consoles
Full Manual Control	Forward & Aft consoles
Integrated Joystick Control	Joystick
Joystick Control	Forward & Aft consoles
Dynamic Positioning System	Navis
DGPS # 1	Fugro Seastar 9200 G2
DGPS # 2	Fugro Seastar 9200 G2 Simrad
Hydro Acoustic Pos Ref #	HIPAP 500 L-USBL with Slave Display (in Survey Room)
Fan Beam Laser	MDL Fanbeam Mark 5

## MOONPOOL

Moonpool #1	1200 X 1200 mm
Moonpool #2	3580 X 3580 mm
Gate Valve #1 - ø500	HIPAP installed
Gate Valve #2 - ø500	Available

## RESCUE AND VESSEL EQUIPMENT

MOB Craft Davit # 1	MOB Davit System
MOB Craft	MOB Boat (Petrol)
Cargo Railing	Removable Cargo Railing Fitted
Winch Area	Forward
Emergency Towing Capability	Forward
Searchlights	2 x
Electrical Power Supply	Deck 440V / 60Hz / 1250A
	Survey power room 440V / 60Hz / 250A
	Disposable 440V / 60 Hz / 125A
Hydraulic Power Supply	Available
Hospital Medicine Chest A	1 x

## NAVIGATION AND COMMUNICATION EQUIPMENT

Radars (Forward)	2 x Furuno ARPA (S&X band)
Radar (Aft)	(Slave Display of S-band)
ECDIS	Fitted
PLB System	AIS
DGPS(s)	Furuno GP170, Sailor 6004
Gyro(s)	3 x Simrad GC80 Gyros
Autopilot	1 x Magnetic Compass
Magnetic Compass	Fitted
Echo Sounder	Fitted
Digital Depth Recorder	Furuno NX 500
Navtex	Sailor 6390
Sat Comms	Full Sat Comms (A3), Sat C, Starlink, KU & 1 x Iridium Sat-phone
MF/HF Radio	Fitted
UHF	Fitted
VHF (Forward)	Fitted
VHF (Aft)	Fitted
AIS	Jotron AIS
Doppler Log	Fitted
SSAS	Trane & Trane
Portable VHF	Fitted
UHF Base	Fitted
Portable UHF	Fitted

## CREW FACILITIES

Crew Cabins	21 single berth cabins, 14 double berth cabins. All cabins fitted with en suite bathroom facilities.
Recreation & Leisure	1 x Messroom, 2 x TV Lounges, 1 x Sauna, 1 x Gym 2 x Ship's Office, 2 x Client's Office & 2 x Survey Room

# IMT 975 Offshore Supply / Survey / ROV Support Vessel (DP2)

ACTIVITY	CONSUMPTION
Transit speed 11.5 Knots	12 - 14 m <sup>3</sup> /day
Econ speed 8 Knots	8.4 - 8.9 m <sup>3</sup> /day
Port	2.0 - 2.2 m <sup>3</sup> /day
DP Class 2 operation	4.5 - 4.7 m <sup>3</sup> /day
Average Lube Consumption	16.6 L/day

Above consumption estimates are based on favourable weather, sea, and swell conditions, and basic deck activities only.

DP Capability plot 100 % availability



## PLOT RESULTS

Capability Plot: All Trusters 100% THRUST

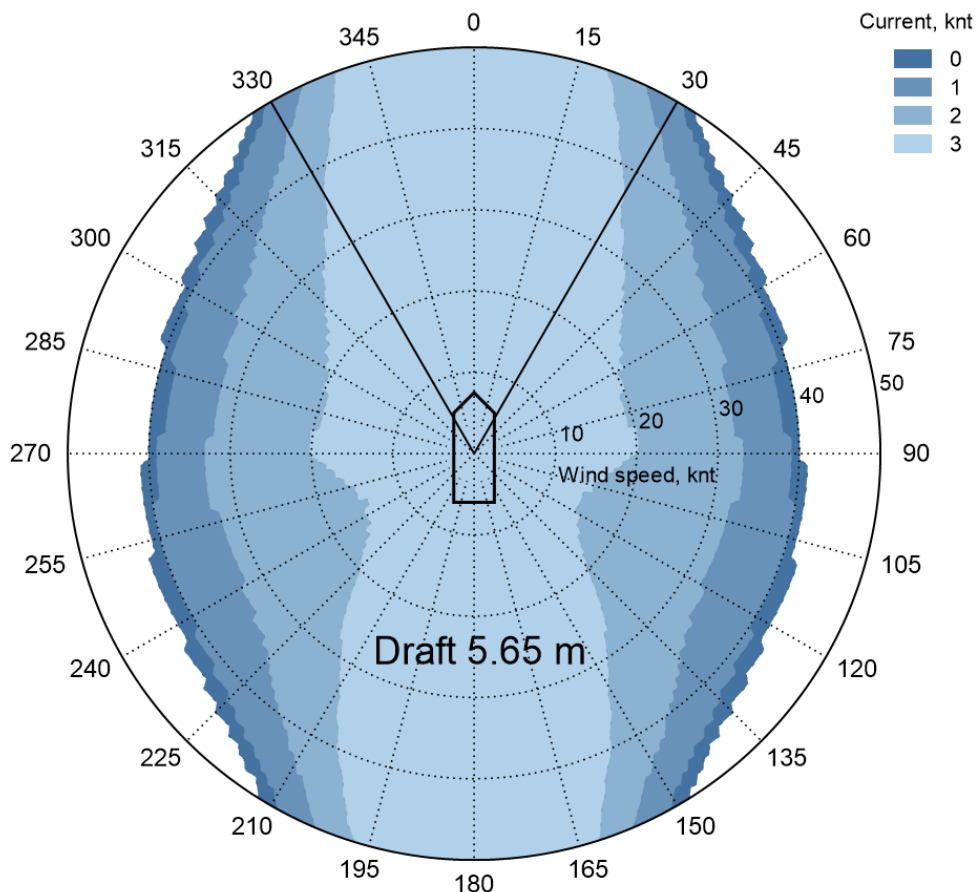
### LIMITS AND PROHIBITED SECTORS (THRUST. %)

# 1 Bow FWD Thr	100%	
# 2 Bow AFT Thr	100%	
# 3 Bow AZ Thr	100%	●
# 4 Port Stern AZ	100%	●
# 5 Stbd Stern AZ	100%	●

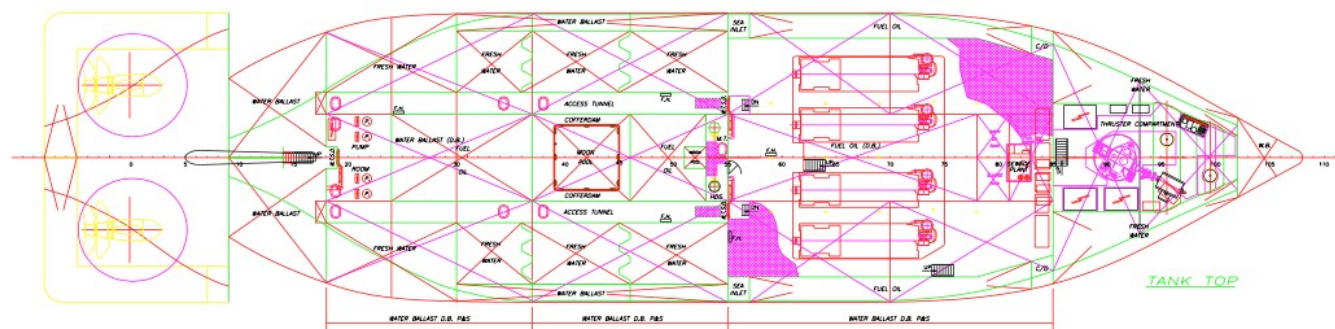
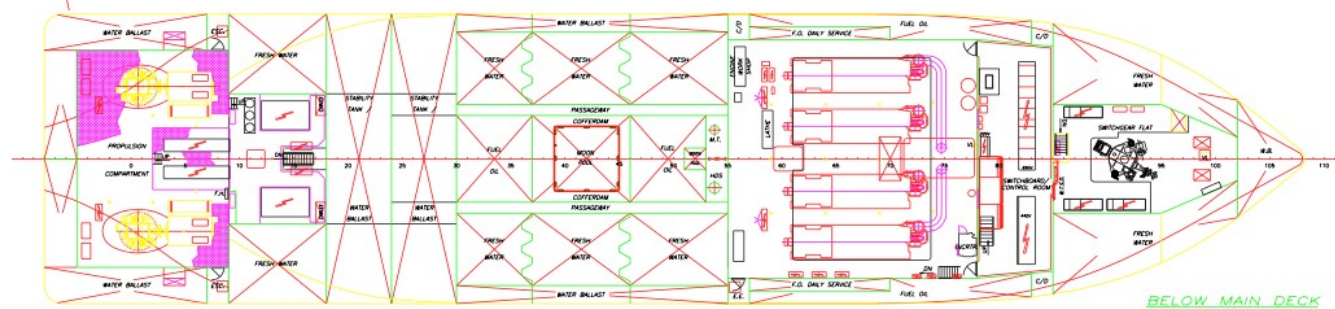
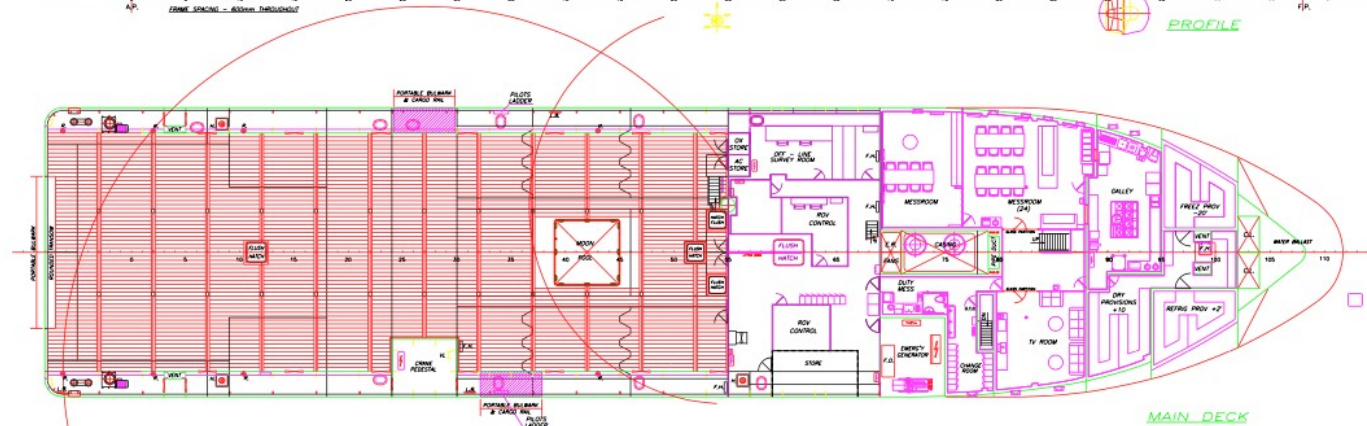
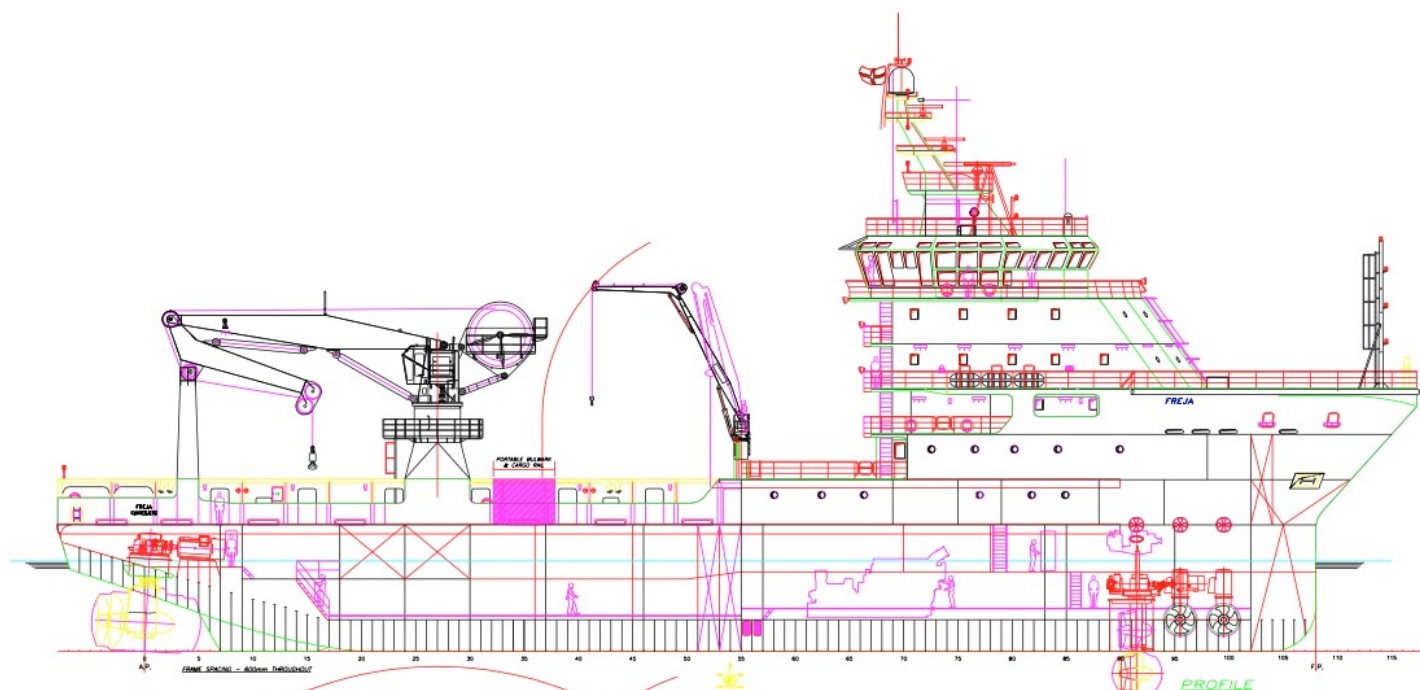
Bus A: 3440 kW  
Bus B: 3440 kW

### ENVIRONMENT

Max wind speed 50.0 kn  
Current Speed 0.0 - 3.0 kn  
Collinear enviroment  
Dynamic factor 1.25



## IMT 975 Offshore Supply / Survey / ROV Support Vessel (DP2)



All details contained in this Data Sheet are believed to be correct but cannot be guaranteed.