



NORTHERN KAROLINE

- *Geophysical seabed mapping*
- *ROV Operations*
- *Geotechnical sampling*
- *Environmental assignments*



Northern Survey

All details in this data sheet are believed to be correct but are not guaranteed. Specifications are subject to change without notice.



NORTHERN KAROLINE

GENERAL INFORMATION

TYPE OF VESSEL	DP Survey & ROV Vessel
Classification	DNV ✕ 1A1 ICE-C EO
Flag state authority	Denmark
Call sign	OZIP2
Port of Registry	Aarhus, Denmark

BUILDER & DIMENSIONS

Built	A. & J. Inglis Ltd. Scotland UK
Year built	1950, Rebuilt 1984 & 2020
Gross tonnage	588 tons
Net tonnage	176 tons
LOA	51.15 m
Breadth	9.00 m
Draft	4.90 m
Required water depth with FWD Azimuth	5.25 m
Service Speed	10,0 knots
Maximim Speed	15,5 knots
Tank Capacity	Bollard pull: 20 tons Fuel Oil: 87,6 m ³ Fresh water: 40.3 m ³

MACHINERY & PROPULSION

Main Engines	Deutz S / BV6M628 1600BHP Caterpillar 3412 650BHP Forward
Bow Thruster	1x Retractable Azimuth Brunvoll AR55 650BHP
Stern thruster	The thruster is also approved as propulsion machinery 1x Brunvoll hydraulic 400HP

POWER SUPPLY:

Diesel generators:	2x Caterpillar 3306 w/Stamford MSC-434 each 180 KWA, 3 x 230 V 50 Hz 1 x John Deere 6068TF258 120 KW with 112 KW/135 KWA, 3 x 230V 50Hz
--------------------	--------------------------------------------------------------------------------------------------------------------------------------------------

DECK EQUIPMENT

Deck Cranes:	AMCO VEBA 946FM-4S SWL 9,180 kg @4.55 m 4.55m SWL 3,220 kg @12,00 m, Rotzler winch ti-tan TC5, 1st layer 5.7 tons/top layer 4.3 tons Heila HLM10-3S Marine Crane SWL 3,600 kg @2.75 meters, SWL 800 kg @10.4 meters Hiab Sea Crane 61 SWL 780 kg A-Frame aft 3.8m width, 4m height, SWL 2tons
--------------	------------------------------------------------------------------------------------------------------------------------------------------------------------------------------------------------------------------------------------------------------------------------------------------------------------------------------------------------------

NAVIGATION and COMMUNICATION EQUIPMENT

NAVIGATION EQUIPMENT

- 1x 3 cm JRC JMA-5310 ARPA radar
- 1x 3 cm Furuno FR 2110 ARPA radar
- 2x DGPS Furuno GP-36/GPS, GP-30
- 2x Transas NaviSailor 4000 dual ECDIS
- 1x satellite Gyro Compass SC-50 1 x Simrad GC 80
- 1x autopilot type Simrad AP 70
- 1x autopilot type Simrad AP 70
- 1x Speed log simrad SAL

COMMUNICATION EQUIPMENT

- 1x Sailor RT-4822 VHF DSC Class A
- 1x Sailor 6310 MF/HF SSB Radio Telephone, DSC CH1
- 1x Sailor SE-406-II EPIRB Manuel
- 1 x Sailor SE-406-II EPIRB Auto (Float free)
- 1 x Sailor AIS-SART 5051
- 2 x Sailor SP 3520 Portable VHF Radio 1-Radio 2
- 1 x Sirius SIR-3 Navtex
- 1 x Furuno GP-37 GPS
- 1 x JOTRON TR-8000 AIS Class A
- 1 x Sailor 6210/3027SS LRIT and SSAS
- 1 x Sailor RT 2018 VHF
- 1 x Sailor RT 2027 VHF
- 4 x Sailor SP 3510 VHF work/ISPS

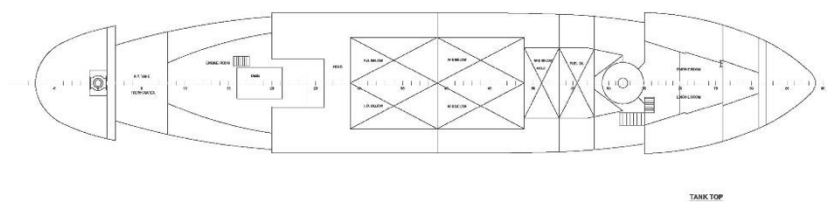
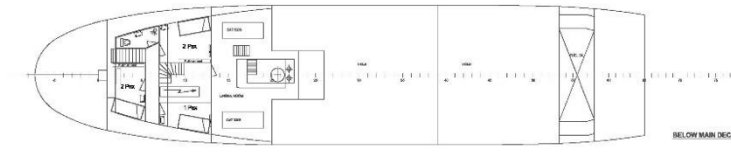
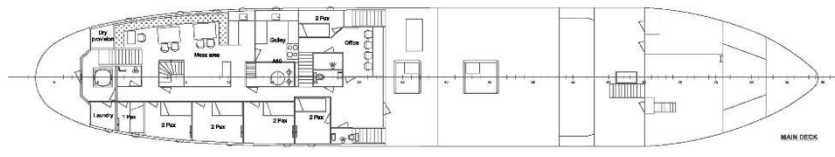
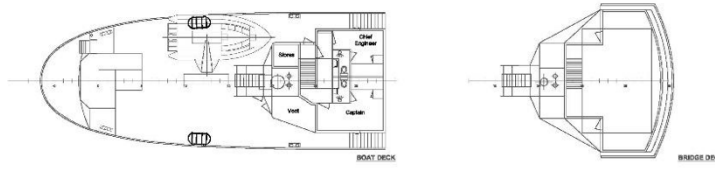
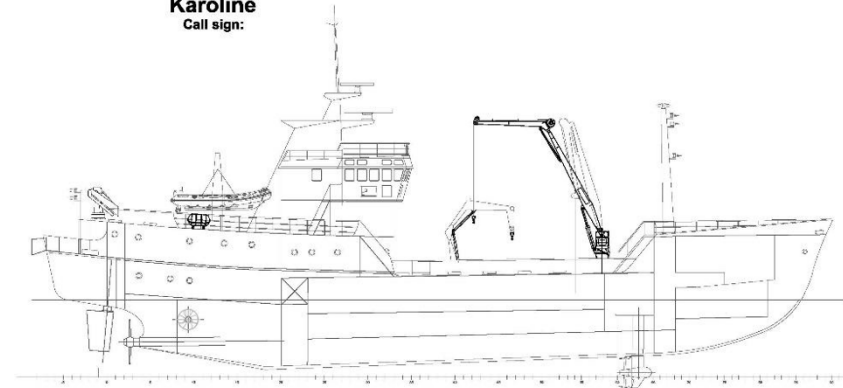
ACCOMMODATION:

- Surveyors' office
- Capacity for up to 12 surveyors
- 6x double berth cabins for surveyors




General Arrangement Karoline

Call sign:



Main Particulars:
 Length overall: 51.65 m
 Length Between Perps: 43.00 m
 Depth to Main Deck: 5.00 m
 Depth to Tank Top: 5.25 m
 Flag: Denmark
 Class: Notation: DMV

Rev	Date	Correction	Int.
 Northern Survey Brundvvej 13 8350 Hvidesten Denmark			
Rev	Date	Correction	Int.
General Arrangement Rev. no.: 20020-03 Date: 15/05/2002 Title: Karoline			

This drawing is the property of Northern Survey and its use for any other purpose without the written consent of Northern Survey is prohibited.